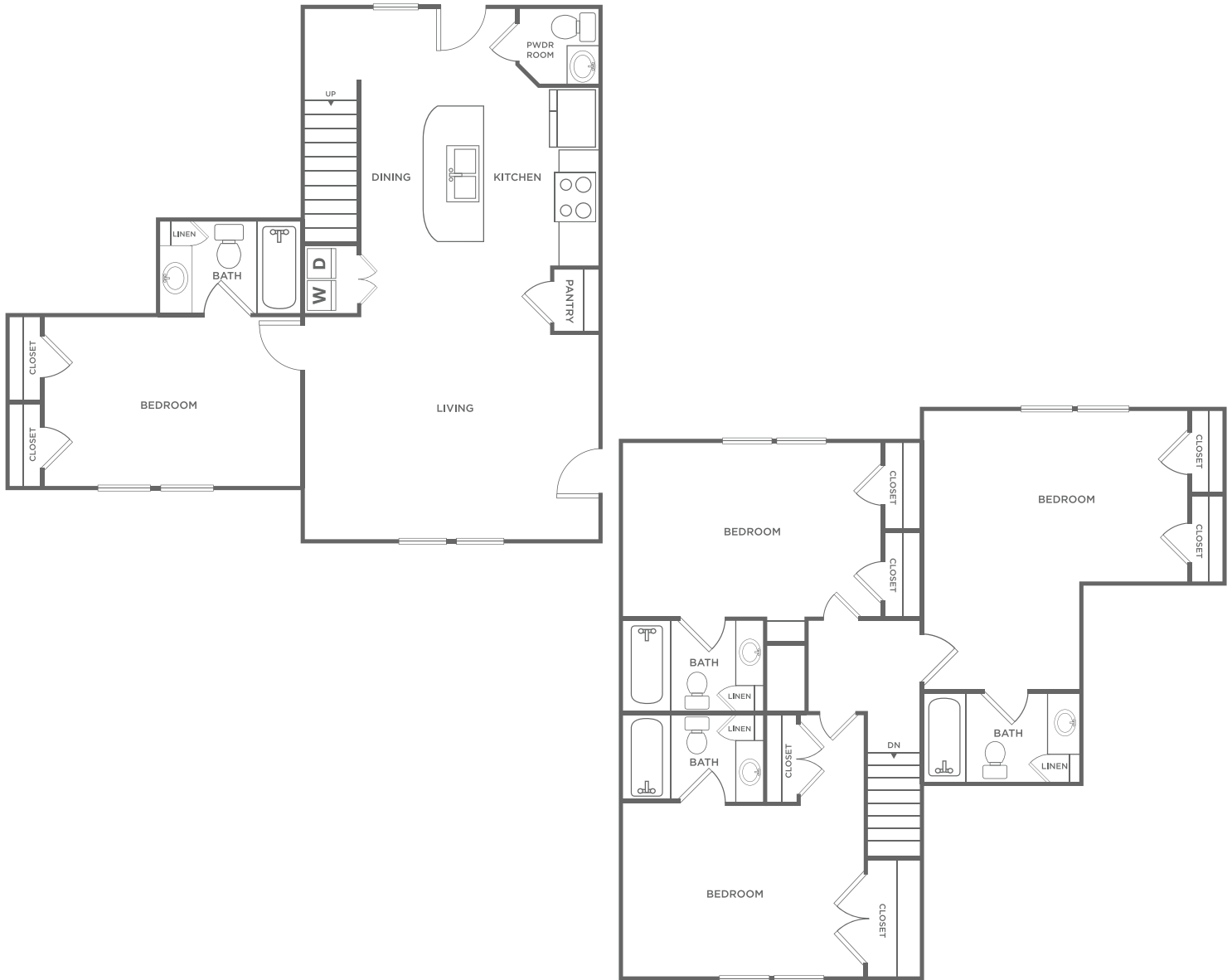


4 BDRM TOWNHOME

4 BED / 4.5 BATH

1700
SQ. FT.



3301 12th Ave SE | Norman, OK 73072

405-701-8434 | www.avenorman.com

Floor plans are artist's rendering. All dimensions are approximate. Actual product and specifications may vary in dimension or detail. Not all features are available in every apartment. Prices and availability are subject to change. Please see a representative for details.